

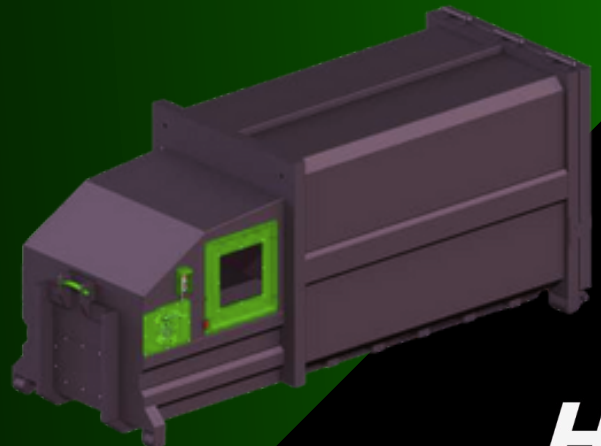
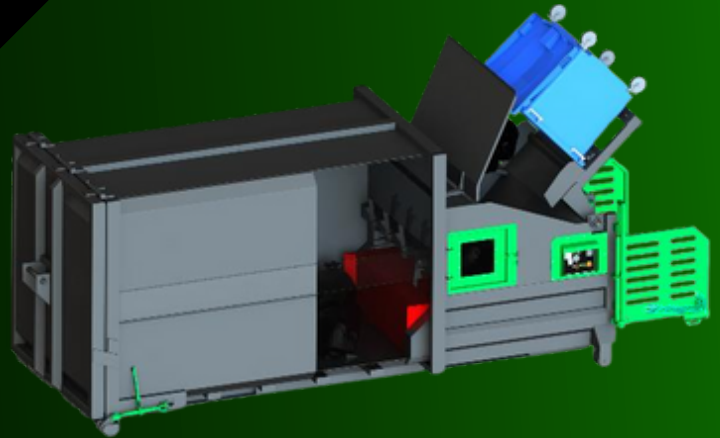
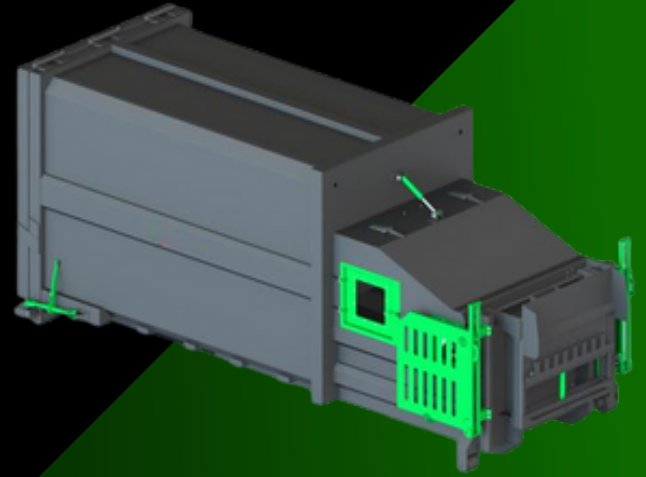
Poseidon Portable Compactors

Poseidon Range features a ratchet type turnbuckle locking device, which gives a strong, secure seal while being quick and easy to open.

This **Portable Waste-Compactor** with fitted multi-purpose bin-lift is a totally self contained waste compaction unit. It is particularly suitable for commercial and food waste generated by larger retail and commercial outlets, office blocks, larger catering establishments, hospitals and factories.

The controls are simple, and contained within a secure, lockable, vandal-proof cabinet. When the unit is full, the unit is removed and emptied by roll-on/off demountable body vehicle. The **Poseidon** can be loaded via **safety hopper** and **fork tip**, manually via safety doors or by an automatic hydraulic tipping device suitable for emptying wheeled Euro Bins.

- Efficient collection & disposal
- Minimal space requirements
- 240 to 1100 Euro wheelie bins
- Multiple options available



SPECIFICATION	DETAIL
Charge Box Volume	24m ³
Motor Size (Kw)	5.5/7.5
Cycle Time (Secs)	45s
Power Supply	415V 3 Phase
Running Pressure(PSI)	1600
Machine Weight(Kg)	5500
Ram Bore / Ram Stroke(mm)	100 / 930
Compaction Force(Tonne)	25
Boost Pressure(PSI)	2200
Length (mm)	6500
Width (mm)	2300
Height (mm)	2800
Head Face Area(m) ²	0.75

